



# IntellectandPatient Chart Manager Hardware and Peripherals

Updated 6/2/2015

## ***Table of Contents***

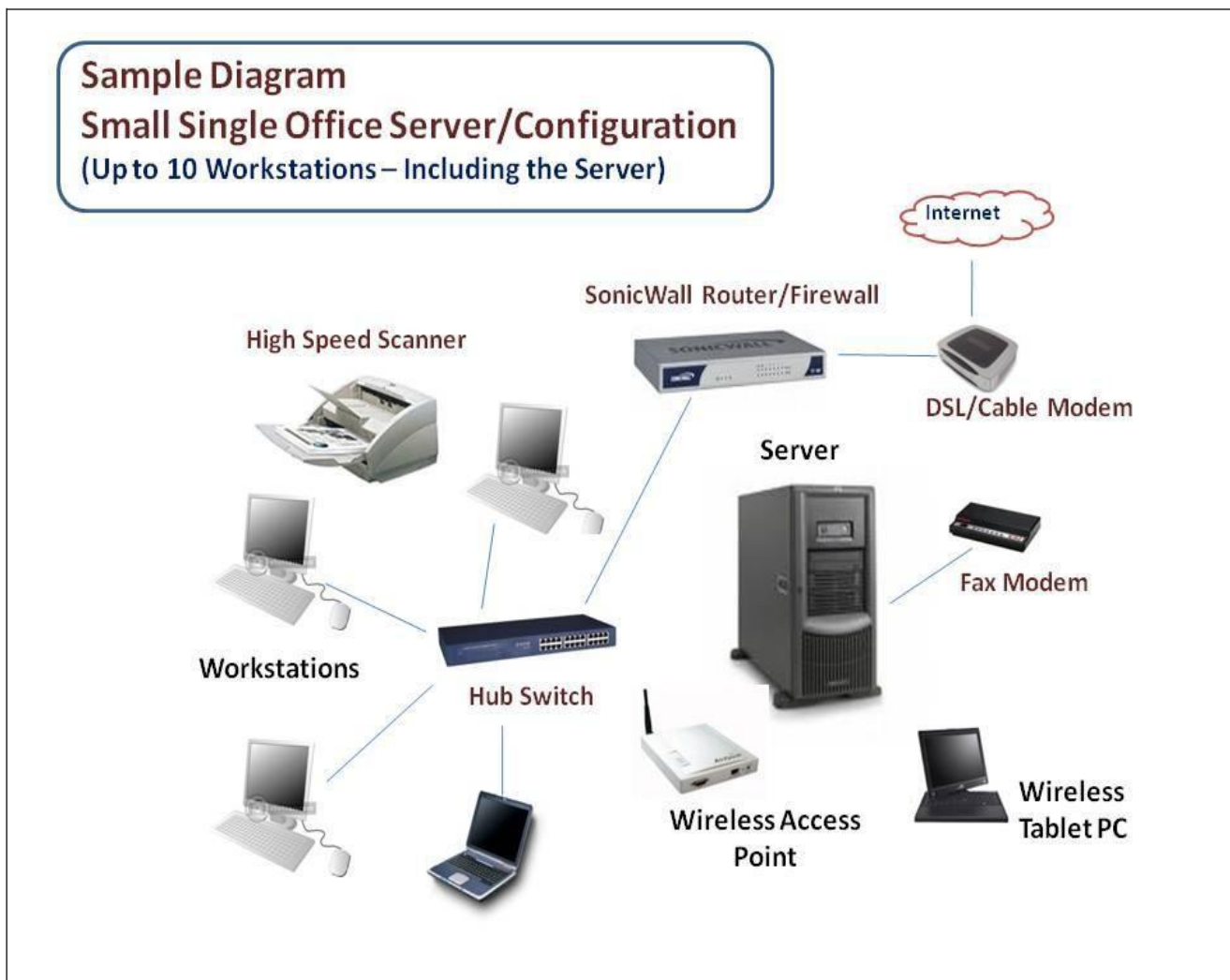
Page 2 – 5	Server Options and Sample Diagrams
Page 6	Server Hosting Requirements
Page 7 - 8	Workstations/Tablets
Page 9-10	Network Printers /RDP - TSPrint
Page 11-12	Scanner Options
Page 13	Thinstuff – TSX Scan
Page 14	Magnetic Stripe Card Reader
Page 15	Wireless Network Options
Page 16	Hardwired Network Options
Page 17	Networking & Remote Connection Needs
Page 18	Internet Connection Options
Page 19	Video Capture Device
Page 20	USB Delcom Foot Switch
Page 21	Voice Recognition Software
Page 22	Backup Power Supply (Smart UPS)
Page 23	Faxing
Page 24	Backup Software
Page 25	Anti-Virus Software
Page 26	Headset
Page 27	Dymo Label Writer 450

## Small Single Office Server (Option 1)

The Practice Share Server for Intellect & Patient Chart Manager

### Windows 2008 Server Standard or Enterprise Edition 64-bit Operating System only

- RDS CALL licenses for Remote Access (2008 Server allows for flexibility in initial or future terminal services use)
- Intel® Xeon® E5-2620 or higher series with 32GB+ of memory
- 17-inch+ monitor
- \*\*500 GB, 10,000 rpm or higher **or** larger HD (a 2<sup>nd</sup> or more 500 GB or equal size HD can offer Mirroring Capability w/Raid)
- Tape or RDX Backup Drive that will support the maximum allowable space of the Hard Disk in native format.
- [Symantec Backup Exec](#) and [Antivirus Software](#) is recommended for this configuration
- Network Interface Card(s) & USRobotics External Fax Modem(s)

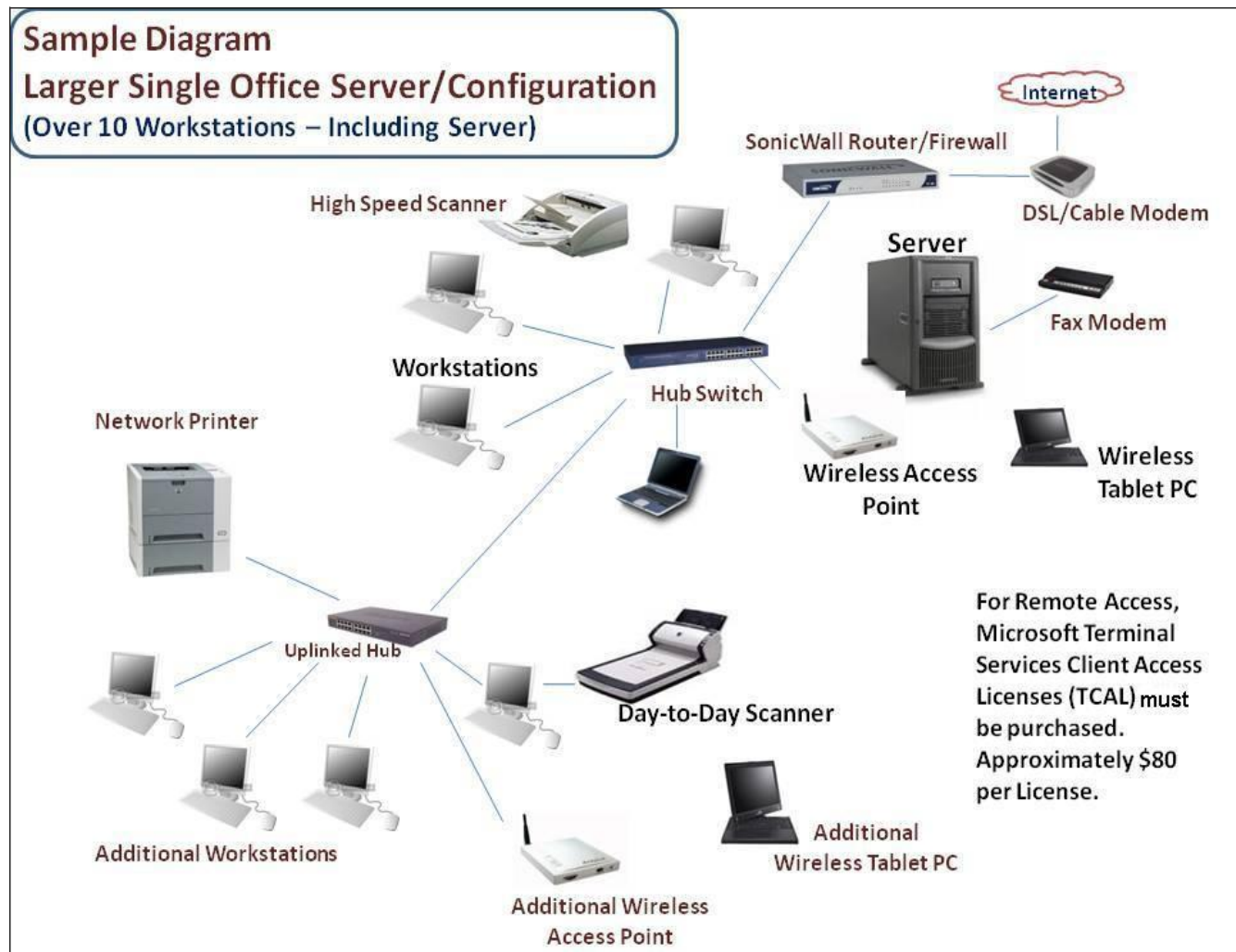


## Larger Single Office Server (Option 2)

The Practice Share File Server for Intellect & Patient Chart Manager

### Windows 2008 Server Standard or Enterprise Edition 64-bit Operating System only

- RDS CAL Licenses for Remote Access (2008 Server allows for flexibility in initial or future terminal services use)
- Intel® Xeon® 5620 series with 32GB+ of memory
- 17-inch+ monitor
- \*\*500 GB (10000 rpm or higher) or larger HD (a 2<sup>nd</sup> or more 500GB or equal size HD can offer Mirroring Capability w/Raid)
- Tape or RDX Backup Drive that will support the maximum allowable space of the Hard Disk in native format. [Symantec Backup Exec](#) and [Antivirus Software](#) is recommended for this configuration
- UPS Power Backup System
- Network Interface Card(s) & US Robotics External Fax Modem(s)



### Larger Multiple Office Server(s) (Option 3)

The Practice Share 2 File Server configuration ( Windows server for Patient Chart Manager and Windows server for Intellect)

#### Windows 2008 Server Standard or Enterprise Edition 64-bit Operating System only

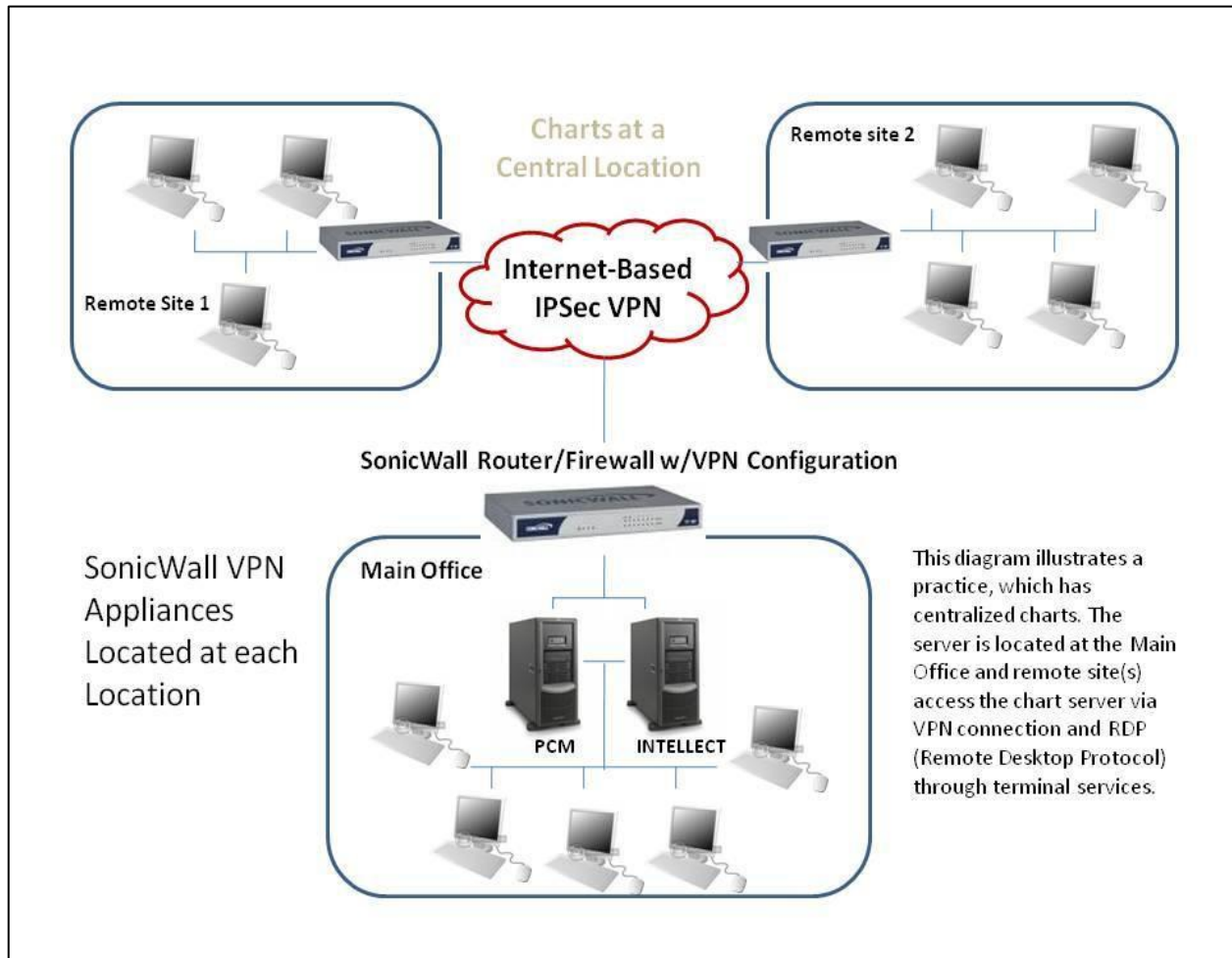
- RDS CALL Licenses for Remote Access (2008 Server allows for flexibility in initial or future terminal services use)
- 2x Intel® Xeon® 5680 series with 32GB+ of memory
- 17-inch+ monitor
- \*\*1 TB or larger HD (a 2<sup>nd</sup> or more, 1 TB HD can offer Mirroring Capability w/Raid)
- Tape or RDX Backup Drive that will support the maximum allowable space of the Hard Disk in native format.
- [Symantec Backup Exec and Antivirus Software](#) is recommended for this configuration
- UPS Power Backup System
- Network Interface Card(s) & US Robotics External Fax Modem(s)

#### Windows 2008 Server Standard or Enterprise Edition 64-bit Operating System only (Oracle Database Server)

- Intel® Xeon® 5680 series with 32GB of memory or higher
- 17-inch monitor or higher
- \*\*300 GB or larger HD (a 2<sup>nd</sup> or more 300 GB or equal size HD can offer Mirroring Capability w/Raid)
- Tape or RDX Backup Drive that will support the maximum allowable space of the Hard Disk in native format
- UPS Power Backup System
- Network Interface Card(s) & US Robotics External Billing Modem

#### **IMPORTANT NOTES:**

- HD/Tape Backup Drive(s) size can vary depending on the size of the practice.
- Backup and Verification of your FILES (Patient Chart Manager and Intellect) are extremely critical
- Windows 2008 Server with Terminal Services Configuration can also provide the ability to have the server act as an Application Server. Thus the EMR program (installed on the server as well) can be ran by connecting to the server by way of a Terminal Service Client application such as RDP (Remote Desktop Connection) installed on any Network PC or even remotely via Internet (this requires a static internet address assigned to the server and a highly recommended secure VPN connection/setup)



With a configuration like the above illustrations (server options 2 or 3 can be used), the Main office **only** will have complete Patient Chart Manager functionality. Each workstation at the Main Office would have the full PCM program installed. The Remote Sites would be using RDP (Remote Desktop Protocol) Sessions to the Main Office and running Patient Chart Manager on that Application Server through Terminal Services **(The Appropriate Number of RDS Client Access Licenses must be purchased)**.

## Server Hosting Requirements:

- Highspeed,stableInternetServicewithStaticIPaddress
- Minimumof1.5 Mbps upload/download speed. **T1** line is preferred
- Windows7/8ProfessionaldesktopOSwithatleast4GBofRAMandICORE5 Processor for the workstations.
- For Scanning and Voice Recognition workstations, at least 6GB of RAM.
- Wireless Access Points for Tablets (if applicable). Cisco WAP preferred.
- Hewlett Packard Laserjet Network TCP/IP Printers (PCL 6 compatible) Model P3015N or higher.
- Twain compliant Scanner. Canon DR-M160 ver2 recommended
- SonicwallFirewallRouter ModelTZ205 or above to establish a VPN (Virtual Private Networking) connection between the Client's office and the Hosting site. A change of IP scheme within the client's office may be necessary to successfully configure the VPN Tunnel.
- All Electronic Claims must be processed using a Clearing House (i.e. Gateway EDI, Optum Insight, Zirmed or Caprio for Conversion clients only)
- **CALLSTAFF** is our automated Patient Appointment Reminder call system.
- To use **CALLSTAFF**, you must sign up with TWILLIO, a third party cloud communications company (which replaces the need for a phone line!). Minimal charges apply. To activate, visit [www.twilio.com](http://www.twilio.com)
- TS Print Software for Remote Printing (Additional information on page 10)
- TSX Scan Software for Remote Scanning must be purchased prior to installation for all remote scanning workstations. (Additional information on page 13)

**TSX Scan software for all remote scanning workstations.** All hosted clients & remote office clients are required to purchase the appropriate number of licenses to support the total number of scanning stations.

### PRICES

**1 Named Client for 1 Server = \$ 179.00**  
**3 Named Client for 1 Server = \$ 499.00**  
**5 Named Client for 1 Server = \$ 769.00**  
**10 Named Client for 1 Server = \$1,389.00**

Prices are subject to change without prior notice. For additional product information, please visit their website at <http://www.thinstuff.com/products>.

# Workstations

## Scanning/Fax Station(s) (Option A)

Physically connected to a High Speed Scanner such as the Canon DR series or other **TWAIN** compliant scanner

- Windows 7/8 Professional
- Intel®Pentium®ICore5 or higher processor with minimum 6GB of RAM (Scanning station can also serve as a "Voice Recognition Station")
- 40GB HDD or higher
- 17" monitor or higher
- 2 (4 preferred) USB Ports to connect USB peripherals.
- \*\*SCSI Controller Card is needed for High Speed Scanners such as the Canon DR3080CII Network Interface Card.
- Sound Card for audio (if needed)

\*\*Note: For faster scanning capabilities a SCSI interface Card for use with High Speed Scanners such as the Cannon DR-5020 with speeds up to 90 pages per minute is recommended.

## Voice Recognition Station(s) (Option B)

Should you choose to utilize the feature

- Windows Professional w/ Dragon Naturally Speaking Software 10.1
- Intel®Pentium®ICore7 or higher processor or higher with minimum 6GB of RAM 40GB HDD or higher
- 17" monitor or higher.
- 2 (4 preferred) USB Ports to connect USB peripherals. Network Interface Card
- \*\* (Olympus DS4000 Digital Voice Recorder w/DSS Sound Card for audio Player Pro Software required for Dictation)

## The Workstations (Option C)

For Front Desk Access

- Windows 7/8 Professional
- Intel®Pentium®ICore5 or higher processor or higher with minimum 4GB of RAM 40GB HDD or higher
- 17" monitor or higher.
- 2 (4 preferred) USB Ports to connect USB peripherals. Network Interface Card
- 2 or more USB Ports Sound Card (If needed)

\*\*Note: Workstations can be equipped with a Wacom Cintiq 15x Pen Tablet Monitor in order to use "Pen Based" EMR Documents

## COMPATIBLE TABLETS



### **Fujitsu LIFEBOOK T902**

Convertible - Core i5 3320M / 2.6 GHz  
Windows 7 Pro 64-bit - 8 GB RAM  
500 GB Hybrid Drive – no optical drive  
13.3" touchscreen 1600 x 900 ( HD+ )  
Intel HD Graphics 4000 - 3G/4G upgradable



### ***Fujitsu LIFEBOOK T904***

Ultrabook - Core i5 4200U / 1.6 GHz  
Windows 7 Pro 64-bit - 8 GB RAM  
500 GB Hybrid Drive - no optical drive  
13.3" touchscreen 2560 x 1440 ( WQHD )  
Intel HD Graphics 4400



Ultrabook - Core i7 4600U / 2.1 GHz -  
Windows 7 Pro 64-bit / Windows 8.1 Pro  
64-bit downgrade pre-installed: Windows 7  
8 GB RAM - 256 GB SSD - 12.5" touch  
screen wide 1920 x 1080 / Full HD - Intel HD  
Graphics 4400 - 802.11ac – black



# NETWORK PRINTERS

The following printers are highly recommended for both **OnStaff-Intellect** and **PCM** applications.



**HP LaserJet Enterprise M601n** Printer - B/W - laser - Legal, A4 - 1200 dpi x 1200 dpi - up to 45 ppm - capacity: 600 sheets - USB, 1000Base-T 10218462



**HP LaserJet Enterprise M601dn** Printer - B/W - duplex - laser - Legal, A4 - 1200 dpi x 1200 dpi - up to 45 ppm - capacity: 600 sheets - USB, 1000Base-T 10218463



**HP LaserJet Enterprise M602x** Printer - B/W - duplex - laser - Legal, A4 - 1200 dpi x 1200 dpi - up to 52 ppm - capacity: 1100 sheets - USB, 1000Base-T



**HP LaserJet Enterprise M603n** Printer - B/W - laser - Legal, A4 - 1200 dpi x 1200 dpi - up to 62 ppm - capacity: 600 sheets - USB, 1000Base-T, direct print USB



**HP Input Tray Feeder**  
Media tray / feeder - 500 sheets in 1 tray(s) - for LaserJet Enterprise M601dn, M601n, M602dn, M602n, M602x, M603dn, M603n, M603xh



### **HP LaserJet P3015dn Printer**

Laser Printer print speeds of up to 42 pages per minute and a fast 400MHz processor.

Model includes a 500-sheet input tray and a 100-sheet multipurpose tray, which takes a broad range of paper types and sizes.

400MHz processor and 48MB of RAM (expandable to 320MB) Hi-Speed USB 2.0



**HP LaserJet P3015x Printer (dtn)** 1200 dpi, print speeds of up to 42 pages per minute and a fast 400MHz processor. Get two 500-sheet input trays, plus a 100-sheet multipurpose tray, which takes a broad range of paper types and sizes. Hi-Speed USB 2.0, 400MHz processor and 48MB of RAM (expandable to 320MB)



**HP LaserJet P3015n Printer** 400MHz processor and 48MB of RAM (expandable to 320MB). Model includes a 500-sheet input tray and a 100-sheet multipurpose tray, which takes a broad range of paper types and sizes. Print speeds of up to 42 pages per minute and a fast 400MHz processor.

## **Remote Desktop Printing – TSPrint**



The printing solution for your Terminal Services/Remote Desktop/VDI or Citrix environment. The simplicity of use and deployment with an affordable licensing system made TSPrint one of the most popular remote desktop printing solutions on the market today. TSPrint optional solution for remote printing in PCM only.

## Scanners (Day-to-Day Scanners)



**Canon imageFORMULA P-215II Scan-tini -**  
Document scanner - Duplex - 8.5 in x 39.4 in -  
600 dpi x 600 dpi - up to 15 ppm (mono) /  
up to 10 ppm (color) - ADF ( 20 sheets ) -  
up to 500 scans per day - USB 2.0



**Canon imageFORMULA DR-6010C -**  
Document scanner - Duplex - 8.5 in x 14 in -  
600 dpi x 600 dpi - up to 60 ppm (mono) /  
up to 60 ppm (color) - ADF ( 100 sheets ) -  
up to 7500 scans per day - USB 2.0, SCSI



**Canon imageFORMULA DR-M160II -**  
Document scanner - Duplex - 8.5 in x 118 in -  
600 dpi - up to 60 ppm (mono) /  
up to 60 ppm (color) - ADF ( 60 sheets ) -  
USB 2.0



**Canon imageFORMULA DR-C225 -**  
Document scanner - Duplex - 8.5 in x 118 in -  
600 dpi - up to 25 ppm (mono) / up to  
25 ppm (color) - ADF ( 30 sheets ) -  
up to 1500 scans per day - USB 2.0



**Canon imageFORMULA DR-C130 -**

Document scanner - Duplex - Ledger -  
600 dpi x 600 dpi - up to 30 ppm (mono) /  
up to 30 ppm (color) - ADF ( 50 sheets ) -  
up to 2000 scans per day - USB 2.0



**Canon imageFORMULA DR-C240 Office**

Document scanner - Duplex - Legal  
600 dpi - up to 45 ppm (mono) /  
up to 30 ppm (color) - ADF ( 60 sheets )  
up to 4000 scans per day - USB 2.0



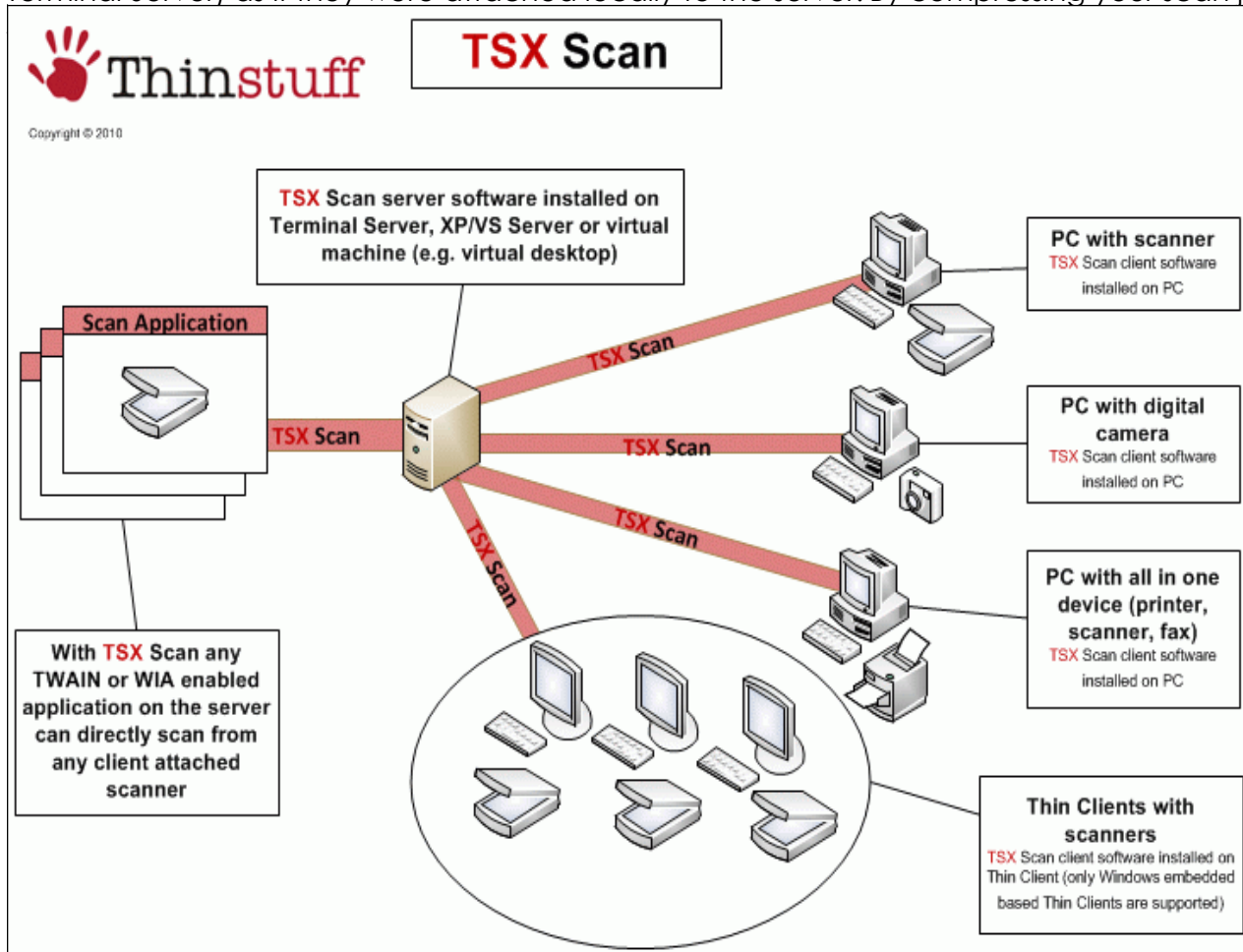
**Canon imageFORMULA DR-F120 Office -**

Document scanner - Duplex - Legal  
600 dpi x 600 dpi - up to 20 ppm (mono) /  
up to 10 ppm (color) - ADF (50 sheets)  
up to 800 scans per day - USB 2.0

## TSX Scan Software

### TWAIN/WIA redirection over RDP:

TSX Scan redirects all client attached scanners (TWAIN and WIA) over RDP to the XP/VS Server (or MS Terminal Server) as if they were attached locally to the server. By compressing your scan jobs TSX



**TSX Scan software is required for all remote scanning workstations.** All hosted clients & remote office clients are required to purchase the appropriate number of licenses to support the total number of scanning stations.

#### PRICES

- 1 Named Client for 1 Server = \$ 179.00
- 3 Named Client for 1 Server = \$ 499.00
- 5 Named Client for 1 Server = \$ 769.00
- 10 Named Client for 1 Server = \$1,389.00

Prices are subject to change without prior notice. For additional product information, please visit their website at <http://www.thinstuff.com/products>.

# Hewlett Packard Magnetic Stripe Card Reader FK186AT

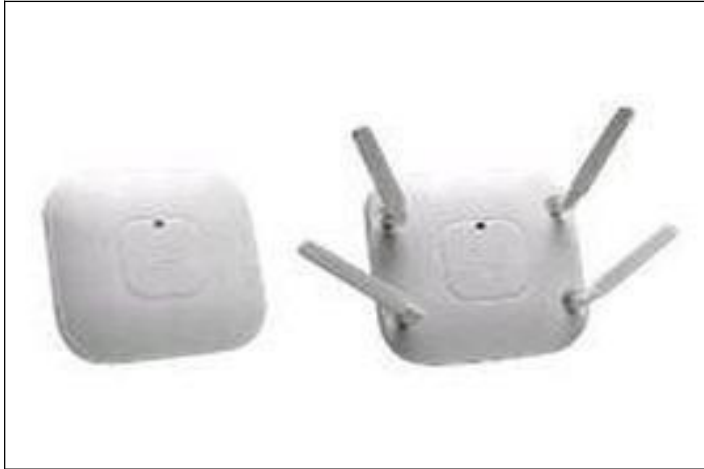


- The HP USB mini magnetic stripe reader (MSR) is a fully intelligent swipe reader that can be programmed to divide, rearrange, edit and validate fields of magnetic card data.
- The HP USB MSR reads up to three tracks of information with a single swipe of a magnetic stripe card in any direction. The beeper and LED signal a successful read. It automatically distinguishes between formats.
- MSR is just 3.5 inches long. It can be used as a freestanding unit or can be mounted using screws, Velcro, or mounting brackets.

## Features

- Ideal for retail environments where counter space is limited, only 3.5 inches long
- Automatically distinguishes between magnetic data formats
- Reads up to three tracks of information with a single swipe of a magnetic card
- Quick and easy card scanning with bi-directional read capabilities
- Can be used as a free-standing unit, mounted to a surface <sup>1</sup> or attached to an HP touch screen or flat panel monitor with accessory rails

## Wireless Networking Options



### **AIR-SAP2602E-A-K9**

Cisco Aironet 2602e Autonomous - Wireless access point - 802.11 a/b/g/n

### **AIR-ANT2524DB-R=**

Cisco Aironet Dual-Band Dipole Antenna – antenna - indoor - 2 dBi, 4 dBi - black - for Aironet 3602E

### **AIR-PWRINJ4=**

Cisco - Power injector - AC 100-240 V - for Aironet 1041, 1042, 1141, 1142, 1250, 1252, 1260, 3500, 3501, 3502, 3602

# Hardwired Networking Options

## Network Switches

These Fast Ethernet switches provide a cost-effective way to instantaneously boost network center performance while preserving most of your network investment, including installed cabling and end users' software and hardware. These switches are ideal for delivering large amount of multimedia, image, and video information to end users at speeds comparable to their hard drives.

### **16 or 24 switched 1000 Mbps ports**

Provide private 1000 Mbps (megabits per second) bandwidth for PCs, servers, or hubs and hence no need to share and compete with other users for bandwidth. They enable an individual user or subnet to upgrade from 10 to 100 Mbps without affecting other users.



**24 Port Switch Shown**

## Small Network Switches

Hubs connect multiple PCs to share printers, files, Internet access, and e-mail communications. One can mix and match 10 and 1000 Mbps PCs, servers, and peripherals with these switches, all without any configuration required.



**8 Port Network Switch Shown**

- **CAT5e Network Cable:**
- **Connect CAT6 cable from Server to Switch(s).**
- **Connect CAT6 cable from Switch(s) to Workstations.**
- **Connect CAT6 cable from Switch(s) to Wireless Access Point(s) – (only if used).**

Please visit Netgear's Website for further information. <http://www.netgear.com/>



## Networking & Remote Connection Needs

The Internet has indeed “revolutionized” the way we communicate and disseminate information. The Internet, as we know it, provides a wide array of informational databases. The speed in which we connect to the Internet has become a concern, which is why most businesses opted to subscribe to a DSL provider.

Prime Clinical Systems has developed the utilization of DSL lines as a means of establishing connection between two or more offices. There are other point-to-point connections available (i.e. 56K Digital line, Frame Relay, T1, etc.); however, DSL is still the most cost effective way to link multiple offices. Although DSL lines vary in speed, depending upon the service requested, it could reach speeds of up to a full 1.5 Mb. of bandwidth. In comparison with a normal 56K analog modem connection, a DSL line is still 2.5x faster at its slowest speed. Routers installed (at each location) contain Network Address Translation (NAT) which will enable all Windows based workstation attached to the Local Area Network (LAN) to share one Static IP address.

Prime Clinical Systems is also committed to protect our client's database from all Internet intruders. Although our Windows 2008 Servers are equipped with password protection, our goal is to provide the utmost security available in today's ever changing technology. This is why we have implemented the use of a firewall appliance called Sonic Wall. This device is attached between your DSL modem and Windows 2008 Server. It offers a high level of security from IP filtering to total blackout. The addition of this device to your current DSL configuration will further enhance patient confidentiality.

### The following are the system requirements for DSL connectivity:

- DSL **MODEM** with at least 1 Static IP address on all Sites.
- Sonic Wall TZ 205 FireWall Appliance



Please Visit SonicWall's Website for further information. <http://www.sonicwall.com/index.html>

# Internet Options for Office Connectivity

Choose from a choice of speeds and connection method from FiOS, AT&T U-verse, T1 & etc. to best suit your office needs. When your office grows and needs more bandwidth, most ISPs allow simple upgrades to a higher speed for a minimal one-time charge. (All speeds may not be available in all areas – Check with your ISP for further information and pricing.)

## FiOS Internet - Business

Even at peak hours, 100% fiber optic network offers you the incredible speeds that enable your business to reach its full potential.

A Sample FiOS Quantum Package may include:

- 75 Mbps Download/35 Mbps Upload; Static IP
- 1-4 users or devices; great for cloud connecting
- Cloud backups, heavy web browsing

## AT&T U-verse High Speed Internet – Business Edition

A digital data server that provides dedicated connectivity to the internet.

**A Sample Max Turbo package may include:**

- 24 Mbps Download/3 Mbps Upload; Static IP
- Wireless networking within your office to share internet access, files, servers, printers, and other devices.
- Powerful security of services with anti-spy, anti-virus, pop-up blocker, content control, SpamGuard Plus, and more.

## T1 – Bandwidth that is guaranteed

Get the bandwidth of a full T1 (1.5 up and down) or choose from 3 speeds of fractional T1s. (All speeds may not be available in all areas):

- 768k x 768k ( "Fractional T1")
- 1.0M x 1.0M ("Fractional T1")
- 1.5M x 1.5M (Full T1)
- A business-class broadband connection that includes features that support multiple users, websites, and customized web and email addressing is recommended.

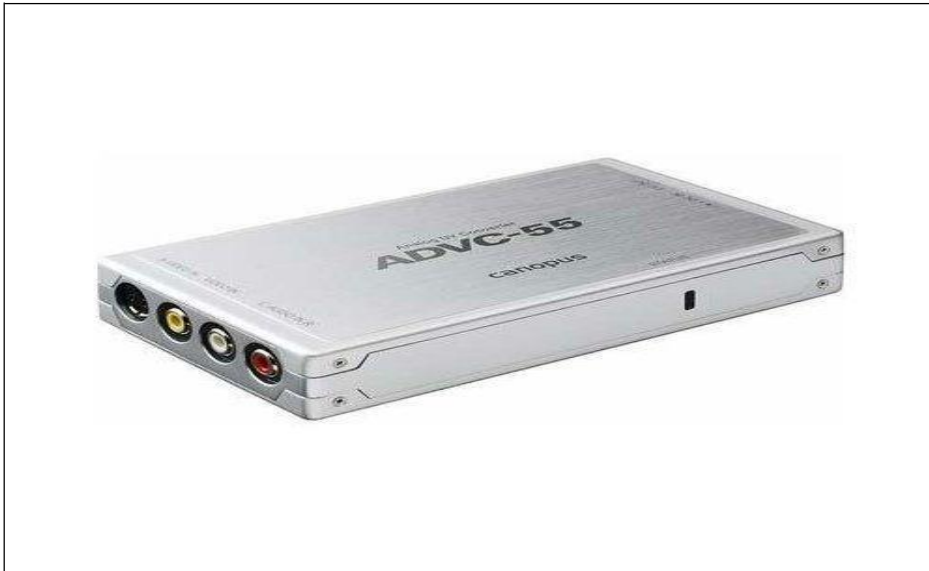
**A Sample T1 Package to look for may include:**

- T1 connection including local loop
- Business Class Router (Firewall/VPN Router can be supplied by Prime)
- 1 static IP [required for routing to server(s) and Up to 5 extra – IPs (If needed)]

**\*\*Note: Internet Access is also a requirement for Prime Support.**

# Video Capture Device

## Canopus ADVC55 A/D Converter



**ADVC55- High-quality Analog-to-Digital Video Conversion – Use ADVC55 to connect VHS, Hi8 and other analog video equipment to a DV camera, deck or editing system. ADVC55 is a compact and easy to use digital video converter compatible with Windows computers.**

### **FEATURES:**

- Connects to all widely used DV and analog video equipment
- Compatible with Windows and Mac OS DV editing systems
- Compatible with leading editing and DVD authoring applications including Canopus EDIUS, Canopus Let's EDIT, Sonic, Foundry®, Vegas®, Final Cut Pro®, Avid Xpress® DV, Adobe® Premiere® Pro, Pinnacle Edition, Ulead Media Studio® Pro, and Windows Movie Maker
- No need to install drivers or any software applications
- Powered by IEEE 1394 (FireWire) connector\*
- NTSC and PAL compatible

**\*\*Note: a video capture card or OHCI FireWire connection is required to capture DV**

## USB Delcom Foot Switch w/5M Cable for Video Capture



- This device is a USB compliant footswitch, which uses the Delcom USB driver.
- It is self-powered and is read via the USB port.
- Simple plug and play technology.
- Dimensions are 3" by 3".
- Includes 5 Meter USB Cable.

# Voice Recognition Software

## Dragon NaturallySpeaking 10 Product Suite

Dragon NaturallySpeaking 10 is here, and the world's best-selling speech recognition system just keeps getting better. Dragon NaturallySpeaking is faster and more accurate than ever, delivering up to 20% more accurate results than Version 9. Your transcribed words now appear on the screen in half the time it took in the past. With new Dragon Voice Shortcuts, you can search the Web for information, products, news and more with a single voice command. Updated graphical icons for the DragonBar are intuitive and easy to see. New Quick Voice Formatting makes it easier to format, delete, and copy words and passages with a single command.

## Installs and Runs on Microsoft Vista 64-bit systems

- Runs on many operating systems, including Vista 64-bit
- In addition to running on 32-bit operating systems, Dragon is now available within a [Vista 64-bit environment](#).
- Customers using many of the latest laptops and desktop PCs that ship with the Vista 64-bit operating system can install and run Dragon in the same manner as other operating systems.

## Enhanced Documentation

- Improved documentation, Help files and Tutorials help to make Dragon easier to set up and use.
- A newly developed "Commands Quick Reference" sheet highlighting the most useful and most popular voice commands is now posted on the Nuance Website and is included on the version 10.1 DVD.
- The online Help, which includes reference material, trouble-shooting information and step-by-step procedures, has been updated to support new features and clarify key topics.
- In addition, the tutorial delivers enhanced navigation capabilities, as well as more details and tips about product features.

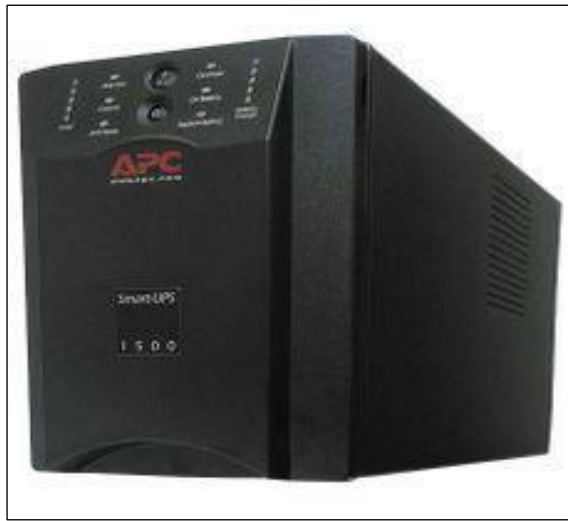


Please visit Scansoft's Website for further information. <http://www.scansoft.com/naturallyspeaking/>

\*\*Available also for Vista Business 64-bit\*\*

# BACKUP POWER SUPPLY (Smart UPS)

## APC Uninterruptible Power Supply UPS1000 OR UPS1500



- The Back-Smart UPS RS offers high performance protection for your business and office computer systems.
- It provides abundant battery backup power, allowing you to work through medium and extended length power outages.
- It also safeguards your equipment from damaging surges and spikes that travel along utility, phone and network lines.
- A distinguishing feature of the Back-Smart UPS RS is automatic voltage regulation (AVR). AVR instantly adjusts both low and high voltages to safe levels, so you can work indefinitely during brownouts and overvoltage situations, saving the battery for power outages when you need it most.
- Award-winning shutdown software automatically powers down your computer system in the event of an extended power outage. Additional features like audible alarms, LED status indicators, user replaceable battery, push-button circuit breakers and plentiful outlets (including transformer-block spaced outlets) make the Back-Smart UPS RS the perfect unit to protect your business' productivity from the constant threat of power problems and lost data.

# FAXING

## Faxing from any workstation using Fax Server Software.

Windows 2008 The Fax Server software would be installed on the server with a fax modem(s). The client software would then be installed on the required network workstations, which allows faxing/receiving from any workstation. [Window 2008 \(Standard Edition\) comes with 4 Fax line capability.](#) [Windows 2008 \(Enterprise or Data Center Edition\) comes with unlimited line support.](#)

Patient Chart Manager uses reliable and robust fax server software already built into Windows 2008 Server that will adapt and expand as your business and communications needs grow.

Save time by faxing directly from desktop software. Your faxes arrive immediately on screen.

### Hardware planning

When planning and deploying a fax server strategy, server hardware decisions affect the performance of your planned fax configuration.

### **Modems and faxboards**

Fax supports the use of Class 1/1.0 and Class 2/2.0 fax modems.

When selecting a fax modem for use with Windows Server 2008 family Fax, consider that an external modem has some advantages over an internal modem:

- External modems have their own power supply and can be switched on and off without the need to restart your computer.
- Most external modems operate independently of the computer. They do not rely on the computer's CPU to provide real-time responses to fax communication events.
- External modems can easily be transported and configured to work with different computers.
- Modem activity can be monitored with the status lights of an external modem. This is useful for diagnostic purposes.

### **NOTES:**

The number of modems you can attach to your computer through a serial COM port is limited by the number of COM ports available. For computers with universal serial bus (USB) ports, you may consider deploying a USB modem to overcome serial port limitations.

For critical fax applications, consider using a faxboard. At the time of writing, Fax Service Provider software is provided by Brooktrout Technology.

You can install Brooktrout faxboards for use with Fax. For more information and specifications, see [Brooktrout Technology products](#).

Other vendors can also provide Fax Service Provider software to extend and enhance Fax functionality.

### **Fax device limitations**

Fax has the following fax device limitations for Windows Server 2003 family computers:

<b>Operating system</b>	<b>Device limitation</b>
Windows Server 2008, Standard Edition	4 devices
Windows Server 2008, Enterprise Edition	Unlimited
Windows Server 2008, Datacenter Edition	Unlimited

# BACKUP SOFTWARE

S Y M A N T E C   B a c k u p   E x e c <sup>TM</sup>   f o r  
W I N D O W S   V E R S I O N   2 0 1 4



**Symantec Backup Exec<sup>TM</sup> 2014SVRforWindows®Servers** is the gold standard in Windows data protection, delivering disk-to-disk-to-tape backup and fast, efficient recovery including certified support for Windows Server 2008. With patent-pending Granular Recovery Technology and continuous data protection for critical Microsoft applications, you can be confident that your business data is always protected and easily restored.

- Enables simple, easy-to-use continuous data protection of Exchange, SQL, and Windows file servers.
- Provides complete disk-to-disk-to-tape protection in one solution.
- Offers fully scalable solution, including centralized management and SAN support for growing businesses.
- Now enhances data security with encryption and protects both 32-bit and 64-bit systems.
- Recovers critical data in seconds including individual Exchange messages, SharePoint documents, and Active Directory items from one backup.
- Eliminates backup windows.
- Delivers fast, reliable data backup and recovery for Windows servers, as well as

**\*\*Notes:**    HD/Tape Backup Drive(s) size can vary depending on the size of practice(s). Backup and Verification of your E.M.R. files are extremely critical—as they are with On-staff!!!

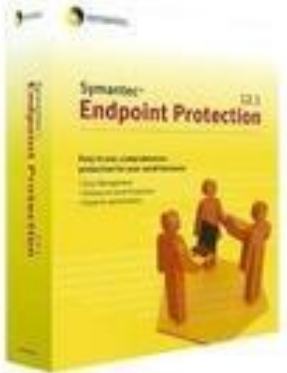
Please Visit the Symantec's Website for further information:

<http://www.symantec.com/product/index.jsp>

**\*\*Microsoft Backup is not recommended.**



# Antivirus Software



Symantec Endpoint Protection goes beyond antivirus to deliver faster, more advanced protection against today's sophisticated and targeted attacks.

Protection layers include firewall, intrusion prevention and anti-virus in addition to Insight and SONAR.

Symantec's unique Insight reputation technology facilitates faster scan times, while SONAR delivers powerful protection against zero-day attacks by monitoring file behavior.

This industry leading solution features a single high-powered agent with advanced management capabilities and support for multiple operating systems.

## Notes:

**Other Anti-Virus/Security programs (i.e. AVAST, AVG and ESET) were found to have caused program delays.**

# HEADSET



## Product Features

### Compatible with CD, DVD and MP3 players and IP-based communication

- Via a detachable USB adapter with two 3.5mm plugs.

### In-line volume control and microphone mute switch

- Let you place noise at your ideal level.

### 10' single-sided cable

- Wind-up clip keeps excess cable wire out of your way.

### 40Hz–20kHz frequency response

- For faithful sound reproduction.

### 118dB sensitivity

- For powerful sound.

### 32 ohms impedance

- To efficiently conduct power.

# DYMO LABEL WRITER 450



## **Labelfaster. Mail smarter. Looksharp.**

Take the hassles out of label printing with the DYMO® LabelWriter® 450 label printer.

Label, mail, and file smarter with proprietary DYMO® Productivity Software, featuring the new DYMO Label version 8, DYMO File™ and Address Fixer™.

DYMO Label version 8 software enables you to create and print address, shipping, file, folder and barcode labels, plus name badges and more—all without the extra work and hassles of printing sheet labels on a standard desktop printer.