



# **ONStaff-Intellect and PCM**

*Updated 03/14/2013*

## **Hardware and Peripherals**

### **Table of Contents**

<b>Page 2 - 5</b>	<b>Server Options and Sample Diagrams</b>
<b>Page 6</b>	<b>Server Hosting Requirements</b>
<b>Page 7 - 9</b>	<b>Workstations/Tablets</b>
<b>Page 10-11</b>	<b>Network Printers /RDP - TSPrint</b>
<b>Page 12-13</b>	<b>Scanner Options</b>
<b>Page 14</b>	<b>Thinstuff – TSX Scan</b>
<b>Page 15</b>	<b>Magnetic Stripe Card Reader</b>
<b>Page 16</b>	<b>Wireless Network Options</b>
<b>Page 17</b>	<b>Hardwired Network Options</b>
<b>Page 18</b>	<b>Networking &amp; Remote Connection Needs</b>
<b>Page 19</b>	<b>Internet Connection Options</b>
<b>Page 20</b>	<b>Video Capture Device</b>
<b>Page 21</b>	<b>USB Delcom Foot Switch</b>
<b>Page 22</b>	<b>Voice Recognition Software</b>
<b>Page 23</b>	<b>Backup Power Supply (Smart UPS)</b>
<b>Page 24</b>	<b>Faxing</b>
<b>Page 25</b>	<b>Backup Software</b>
<b>Page 26</b>	<b>Anti-Virus Software</b>
<b>Page 27</b>	<b>Headset</b>
<b>Page 28</b>	<b>Dymo Label Writer 450</b>
<b>Page 29</b>	<b>Windows 7 Professional</b>

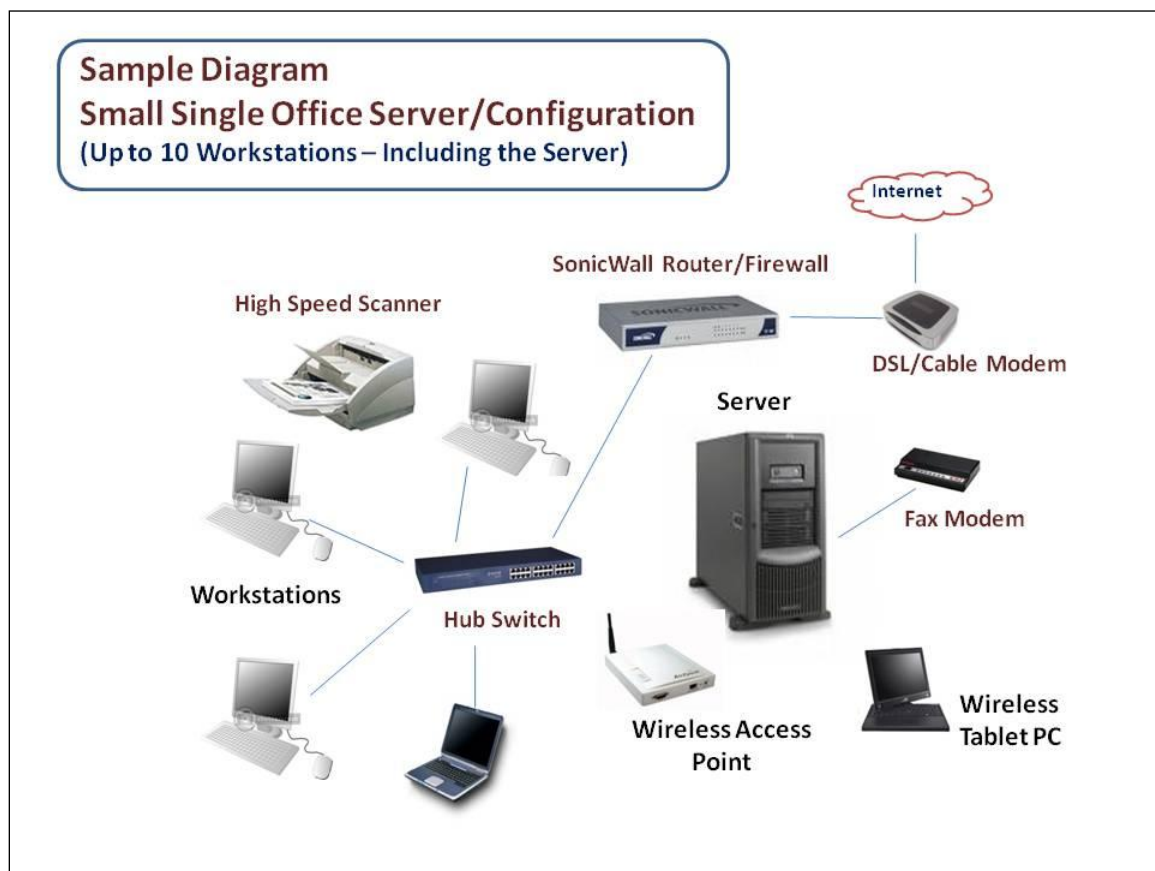
### **Small Single Office Server (Option 1)**

#### **The Practice Share Server**

(File Server for Patient Chart Manager and OnStaff Intellect)

#### **Windows 2008 Server Standard or Enterprise Edition 32/64-bit Operating System only**

- (+TCAL Licenses for Remote Access) (2008 Server allows for flexibility in initial or future terminal services use - if needed)
  - Intel® Xeon® E5-2620 or higher series with 32GB of memory or higher
  - 17-inch monitor or higher
  - \*\*500 GB (10000 rpm or higher) or larger HD (a 2<sup>nd</sup> or more 500 GB or equal size HD can offer Mirroring Capability w/Raid)
  - Tape or RDX Backup Drive that will support the maximum allowable space of the Hard Disk in native format.
  - [Symantec Backup Exec](#) is recommended for this configuration, and Antivirus Software is recommended
- Network Interface Card(s) & USRobotics External Fax Modem(s)



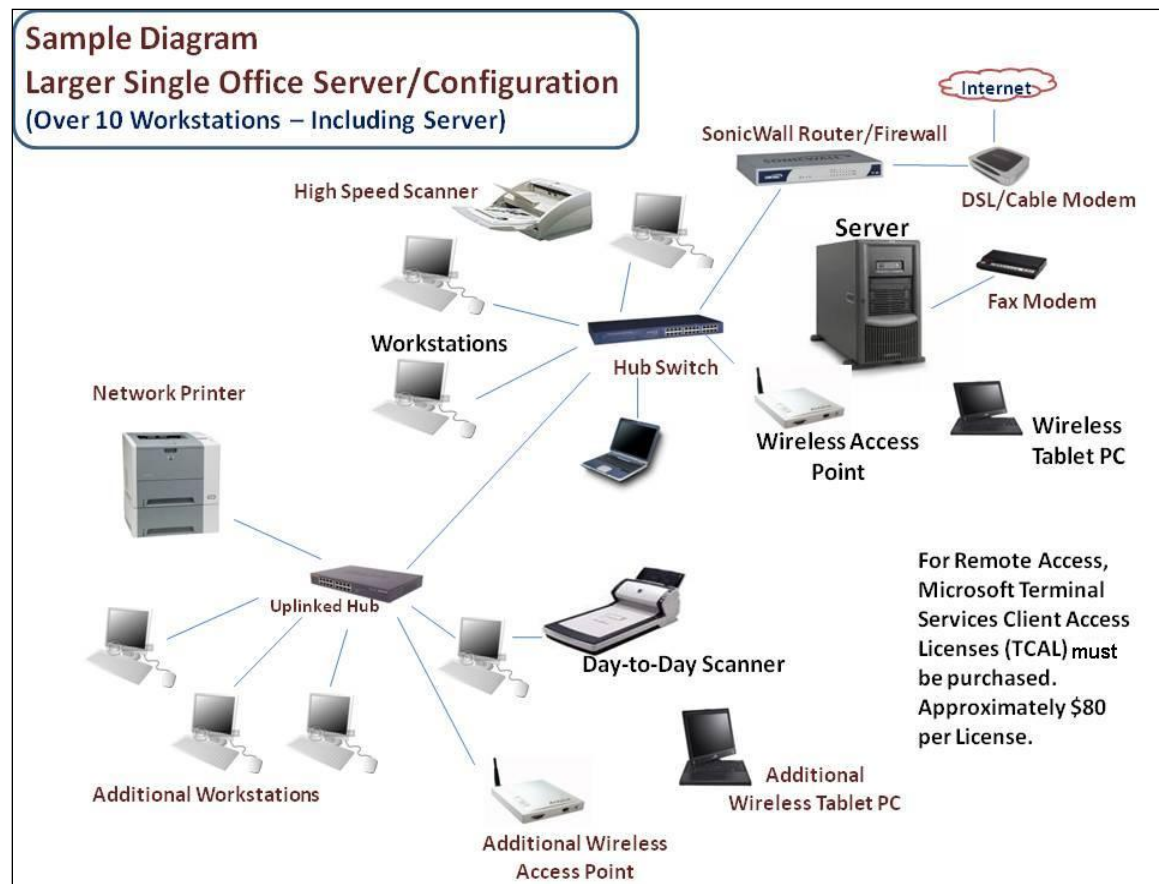
## Larger Single Office Server

### The Practice Share Server (Option 2)

(File Server for Patient Chart Manager and OnStaff Intellect)

#### **Windows 2008 Server Standard or Enterprise Edition 32/64-bit Operating System only**

- (+TCAL Licenses for Remote Access) 2008 Server allows for flexibility in initial or future terminal services use - if needed)
- Intel® Xeon® 5620 series with 32GB of memory or higher
- 17-inch monitor or higher
- \*\*500 GB (10000 rpm or higher) or larger HD (a 2<sup>nd</sup> or more 500GB or equal size HD can offer Mirroring Capability w/Raid)
- Tape or RDX Backup Drive that will support the maximum allowable space of the Hard Disk in native format.
- [Symantec BackupExec](#) is recommended for this configuration, and Antivirus Software is recommended
- UPS Power Backup System
- Network Interface Card(s) & USRobotics External Fax Modem(s)



### **Larger Multiple Office Server(s)**

#### **The Practice Share Server (Option 3)**

(2-Servers- Windows server for Patient Chart Manager and Windows server for OnStaff Intellect)

#### **Windows 2008 Server Standard or Enterprise Edition 64-bit Operating System only**

- (+TCAL Licenses for Remote Access) (2003/2008 Server allows for flexibility in initial or future terminal services use - if needed)
- 2x Intel® Xeon® 5680 series with 32GB of memory or higher
- 17-inch monitor or higher
- \*\*1 TB or larger HD (a 2<sup>nd</sup> or more, 1 TB HD can offer Mirroring Capability w/Raid)
- Tape or RDX Backup Drive that will support the maximum allowable space of the Hard Disk in native format.
- Symantec Backup Exec is recommended for this configuration, and Antivirus Software is recommended
- UPS Power Backup System
- Network Interface Card(s) & USRobotics External Fax Modem(s)

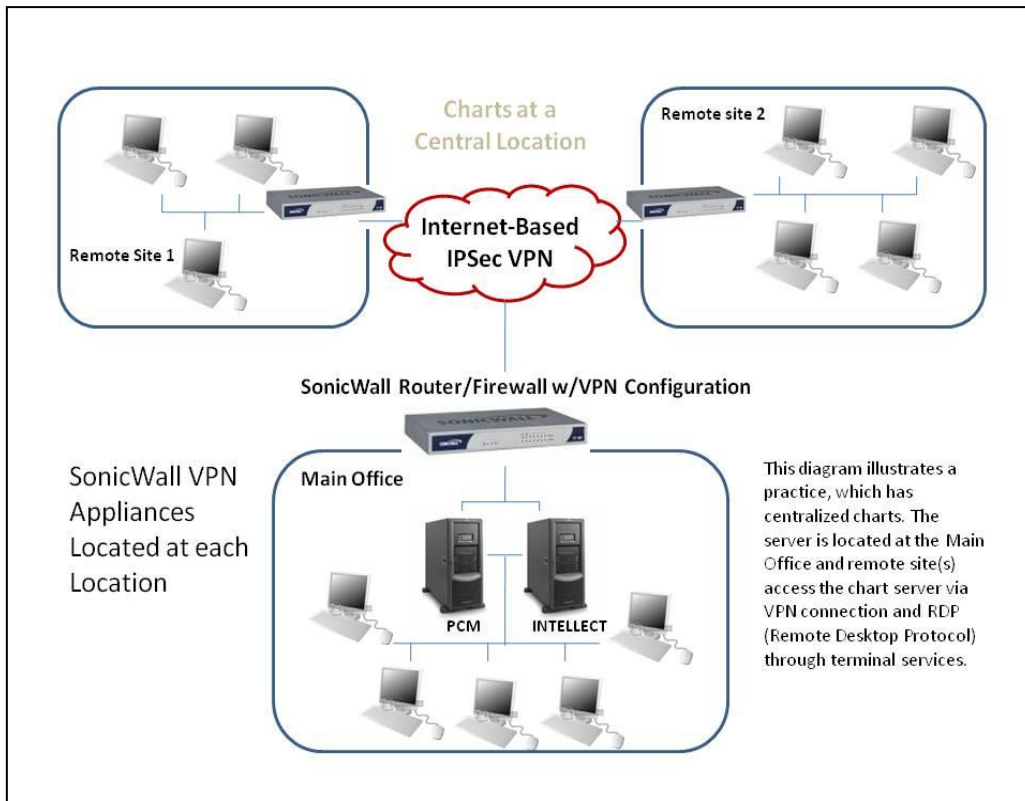
#### **Windows 2008 Server Standard or Enterprise Edition 64-bit Operating System only**

(Oracle Database Server)

- Intel® Xeon® 5680 series with 32GB of memory or higher
- 17-inch monitor or higher
- \*\*300 GB or larger HD (a 2<sup>nd</sup> or more 300 GB or equal size HD can offer Mirroring Capability w/Raid)
- Tape or RDX Backup Drive that will support the maximum allowable space of the Hard Disk in native format
- UPS Power Backup System
- Network Interface Card(s) & USRobotics External Billing Modem

#### **NOTES**

- HD/Tape Backup Drive(s) size can vary depending on the size of practice(s). Backup and Verification of your Patient Chart Manager files are extremely critical – as they are with On-staff!!!
- Windows2008 Server with Terminal Services Configuration can also provide the ability to have the server act as an Application Server. Thus the EMR program (installed on the server as well) can be ran by connecting to the server by way of a Terminal Service Client application such as RDP (Remote Desktop Connection) installed on any Network PC or even remotely via Internet (this requires a static internet address assigned to the server and a highly recommended secure VPN connection/setup)



With a configuration like the above illustrations (server options 2 or 3 can be used), the Main office only will have complete Patient Chart Manager functionality. Each workstation at the Main Office would have the full PCM program installed. The Remote Sites would be using RDP (Remote Desktop Protocol) Sessions to the Main Office and running Patient Chart Manager on that Application Server through Terminal Services (**The Appropriate Number of Terminal Client Access Licenses must be purchased**).

# **Server Hosting Requirements:**

High speed and stable Internet Service with Static IP address and a minimum of 1.5 Mbps upload/download speed. T1 line preferred

Windows 7 PRO 32/64bit or Windows XP PRO 32-bit Service Pack 3 with at least 2GB of RAM and ICore 3 Processor for the workstations. For Scanning and Voice Recognition workstations, at least 4GB of RAM.

Wireless Access Ponto for Tablets (if applicable). Cisco WAP preferred.

Hewlett Packard Laserjet Network TCP/IP Printers (PCL 6 compatible) Model 3015N or higher.

Twain complaint Scanner. Canon DR3010C recommended

Sonicwall Firewall Router Model TZ200 or above to establish a VPN (Virtual Private Networking) connection between the Client's office and the Hosting site. A change of IP scheme within the client's office may be necessary to successfully configure the VPN Tunnel.

All Electronic Claims must be process using a Clearing House (i.e. Capario, Gateway, etc.)

Call Staff must use a third party company (Twilio Inc.) to process patient reminders.

# Workstations

## **Scanning/Fax Station(s)** (Option A)

(Physically connected to a High Speed Scanner such as the Canon DR series or other **TWAIN** compliant scanner)

Windows 7 Professional or Windows XP Professional 32-bit  
Intel® Pentium® ICORE5 or higher processor or higher with minimum 4GB of RAM  
(Scanning station can also serve as a "Voice Recognition Station").  
40GB HDD or higher  
17" monitor or higher.  
2 (4 preferred) USB Ports to connect USB peripherals.  
\*\*SCSI Controller Card is needed for High Speed Scanners such as the Canon DR3080CII  
Network Interface Card.  
Sound Card for audio (if needed)

\*\*Note: For faster scanning capabilities a SCSI interface Card for use with High Speed Scanners such as the Cannon DR-5020 with speeds up to 90 pages per minute is recommended.

## **Voice Recognition Station(s)** (Option B)

(Should you choose to utilize the feature)

Windows 7 Professional or Windows XP Professional 32-bit w/ Dragon Naturally Speaking Software 10.1  
Intel® Pentium® ICORE5 or higher processor or higher with minimum 4GB of RAM  
40GB HDD or higher  
17" monitor or higher.  
2 (4 preferred) USB Ports to connect USB peripherals.  
Network Interface Card  
\*\*(Olympus DS4000 Digital Voice Recorder w/DSS    Sound Card for audio    Player Pro Software  
required for Dictation)

## **The Workstations** (Option C)

(For Front Desk Access)

Windows 7 Professional or Windows XP Professional 32-bit  
Intel® Pentium® ICORE5 or higher processor or higher with minimum 4GB of RAM  
40GB HDD or higher  
17" monitor or higher.  
2 (4 preferred) USB Ports to connect USB peripherals.  
Network Interface Card  
2 or more USB Ports  
Sound Card (If needed)

\*\*Note: Workstations can be equipped with a Wacom Cintiq 15x Pen Tablet Monitor in order to use of any "Pen Based" EMR Documents

\*\*\*Note:

# COMPATIBLE TABLETS



**Fujitsu LIFEBOOK T902 -  
Notebook / tablet - Core i5 3320M /  
2.6 GHz - Windows 7 Professional  
32-bit - 4 GB RAM - 500 GB HDD -  
DVD SuperMulti DL - 13.3" WVA  
wide 1600 x 900 / HD+ - Intel HD  
Graphics 4000 - 3G upgradable -  
keyboard**



**Lenovo ThinkPad X230 Tablet  
3435 - Core i7 3520M / 2.9 GHz -  
Windows 7 Professional 64-bit - 8  
GB RAM or higher - 180 GB SSD -  
12.5" Multi-Touch wide 1366 x 768  
/ HD - Intel HD Graphics 4000 - 3G  
upgradable**



**Lenovo ThinkPad X230 Tablet  
3435 - Core i7 3520M / 2.9  
GHz - Windows 7 Professional 64-  
bit - 8 GB RAM or higher - 320 GB  
HDD - 12.5" Multi-Touch wide 1366  
x 768 / HD - Intel HD Graphics  
4000 - 3G upgradable**





**Samsung Series 7 Slate PC - Tablet - Windows 7 Professional 64-bit - 128 GB - 11.6" TFT (1366 x 768) - rear camera + front camera - microSD slot - Wi-Fi, Bluetooth - 3G - black**



**Samsung Slate PC Dock AA-RD5NDOC - Docking station - LAN 4716AL**



**Samsung AA - SK2NWBB - Keyboard - wireless - Bluetooth - for Samsung Galaxy Tab 7.0 Plus, Galaxy Tab 7.0 Plus WiFi 5471AG**

# NETWORK PRINTERS

The following printers are highly recommended for both **OnStaff-Intellect** and **PCM** applications.



## **HP LaserJet Enterprise M601n**

Printer - B/W - laser - Legal, A4 - 1200 dpi x 1200 dpi - up to 45 ppm - capacity: 600 sheets - USB, 1000Base-T 10218462



## **HP LaserJet Enterprise M601dn**

Printer - B/W - duplex - laser - Legal, A4 - 1200 dpi x 1200 dpi - up to 45 ppm - capacity: 600 sheets - USB, 1000Base-T 10218463



## **HP LaserJet Enterprise M602x**

Printer - B/W - duplex - laser - Legal, A4 - 1200 dpi x 1200 dpi - up to 52 ppm - capacity: 1100 sheets - USB, 1000Base-T



## **HP LaserJet Enterprise M603n**

Printer - B/W - laser - Legal, A4 - 1200 dpi x 1200 dpi - up to 62 ppm - capacity: 600 sheets - USB, 1000Base-T, direct print USB



## **HP Input Tray Feeder**

Media tray / feeder - 500 sheets in 1 tray(s) - for LaserJet Enterprise M601dn, M601n, M602dn, M602n, M602x, M603dn, M603n, M603xh



### **HP LaserJet P3015dn Printer**

Laser Printer print speeds of up to 42 pages per minute and a fast 400MHz processor. Model includes a 500-sheet input tray and a 100-sheet multipurpose tray, which takes a broad range of paper types and sizes. 400MHz processor and 48MB of RAM (expandable to 320MB) Hi-Speed USB 2.0



### **HP LaserJet P3015x Printer (dtn)**

1200 dpi, print speeds of up to 42 pages per minute and a fast 400MHz processor. Get two 500-sheet input trays, plus a 100-sheet multipurpose tray, which takes a broad range of paper types and sizes. Hi-Speed USB 2.0, 400MHz processor and 48MB of RAM (expandable to 320MB)



### **HP LaserJet P3015n Printer**

400MHz processor and 48MB of RAM (expandable to 320MB). Model includes a 500-sheet input tray and a 100-sheet multipurpose tray, which takes a broad range of paper types and sizes. Print speeds of up to 42 pages per minute and a fast 400MHz processor.

## **Remote Desktop Printing - TSPrint**



The printing solution for your **Terminal Services/Remote Desktop/VDI or Citrix** environment. The simplicity of use and deployment with an affordable licensing system made **TSPrint** one of the most popular **remote desktop printing** solutions on the market today.

Cost: \$299.00

## Scanners (Day-to-Day Scanners)



### **CANON P-215**

Canon imageFORMULA P-215 Scan-tini - Document scanner - Duplex - Legal - 600 dpi x 600 dpi - up to 15 ppm (mono) / up to 10 ppm (color) - ADF (20 sheets) - up to 500 scans per day - SuperSpeed USB 3.0



### **CANON DR-3010C**

Canon imageFORMULA DR-3010C - Document scanner - Duplex - Legal - 600 dpi x 600 dpi - up to 30 ppm (mono) / up to 30 ppm (color) - ADF (50 sheets) - up to 3000 scans per day - Hi-Speed USB



### **CANON DR-6010**

Canon imageFORMULA DR-6010C - Document scanner - Duplex - 8.6 in x 14 in - 600 dpi x 600 dpi - up to 60 ppm (mono) / up to 60 ppm (color) - ADF (100 sheets) - up to 7500 scans per day - Ultra SCSI / Hi-Speed USB



### **CANON DR-M160**

Canon imageFORMULA DR-M160 - Document scanner - Duplex - 8.5 in x 118 in - 600 dpi x 600 dpi - up to 60 ppm (mono) / up to 60 ppm (color) - ADF (60 sheets) - up to 7000 scans per day - Hi-Speed USB



### **CANON DR-C125**

Canon imageFORMULA DR-C125 - Document scanner - Duplex - 8.5 in x 118 in - 600 dpi x 600 dpi - up to 25 ppm (mono) / up to 25 ppm (color) - ADF (30 sheets) - up to 1500 scans per day - Hi-Speed USB



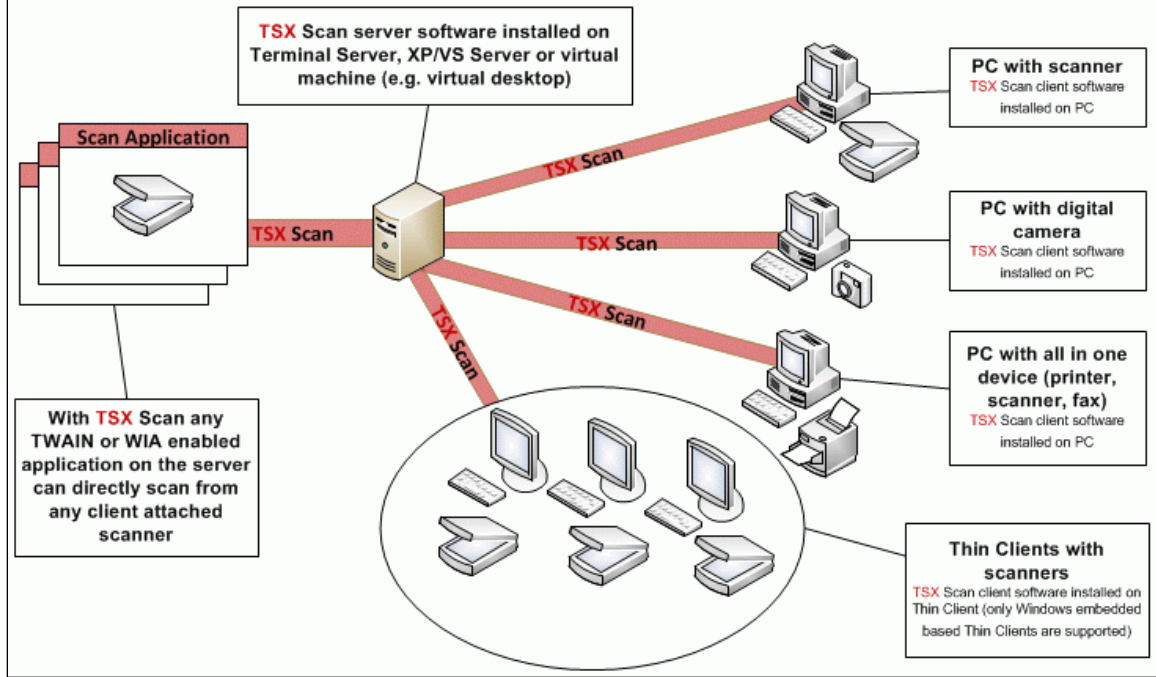
### **CANON DR-C130**

Canon imageFORMULA DR-C130 - Document scanner - Duplex - Ledger - 600 dpi x 600 dpi - up to 30 ppm (mono) / up to 30 ppm (color) - ADF (50 sheets) - up to 2000 scans per day - Hi-Speed USB



Copyright © 2010

## TSX Scan



### PRICING

- 1 Named Client for 1 Server = \$180.00
- 3 Named Client for 1 Server = \$500.00
- 5 Named Client for 1 Server = \$770.00
- 10 Named Client for 1 Server = \$1,398.00

TSX Scan software is required for all remote scanning workstations. All hosted clients are required to purchase the appropriate number of licenses to support the total number of scanners.

# Hewlett Packard Magnetic Stripe Card Reader FK186AT



The HP USB mini magnetic stripe reader (MSR) is a fully intelligent swipe reader that can be programmed to divide, rearrange, edit and validate fields of magnetic card data.

The HP USB MSR reads up to three tracks of information with a single swipe of a magnetic stripe card in any direction. The beeper and LED signal a successful read. It automatically distinguishes between formats.

MSR is just 3.5 inches long. It can be used as a freestanding unit or can be mounted using screws, Velcro, or mounting brackets.

## Features

- Ideal for retail environments where counter space is limited, only 3.5 inches long
- Automatically distinguishes between magnetic data formats
- Reads up to three tracks of information with a single swipe of a magnetic card
- Quick and easy card scanning with bi-directional read capabilities
- Can be used as a free-standing unit, mounted to a surface <sup>1</sup> or attached to an HP touch screen or flat panel monitor with accessory rails <sup>2</sup>

# Wireless Networking Options



## **AIR-AP1262N-A-K9**

Cisco Aironet 1260 Series Access Point (Standalone) - Wireless access point - 802.11 a/b/g/n

## **AIR-ANT2451NV-R=**

Cisco Aironet Dual Band MIMO Low Profile Ceiling Mount Antenna - Antenna - 802.11n - indoor - 3.5 dBi peak (for 5150 MHz - 5850 MHz), 2.5 dBi peak (for 2400 MHz - 2500 MHz) - omni-directional

## **AIR-PWRINJ4=**

Cisco - Power injector - AC 100-240 V - for Aironet 1250 Modular Unified Access Point Platform, 1252AG, 1252G



# Hardwired Networking Options

## Network Switches

These Fast Ethernet switches provide a cost-effective way to instantaneously boost network center performance while preserving most of your network investment, including installed cabling and end users' software and hardware. These switches are ideal for delivering large amount of multimedia, image, and video information to end users at speeds comparable to their hard drives.

### **16 or 24 switched 10/100/1000 Mbps ports**

Provide private 10/100/1000 Mbps (megabits per second) bandwidth for PCs, servers, or hubs and hence no need to share and compete with other users for bandwidth. They enable an individual user or subnet to upgrade from 10 to 100 Mbps without affecting other users.



24 Port Switch Shown

## Small Network Switches

Hubs connect multiple PCs to share printers, files, Internet access, and e-mail communications. One can mix and match 10 and 1000 Mbps PCs, servers, and peripherals with these switches, all without any configuration required.



8 Port Network Switch Shown

- CAT5e Network Cable:
- Connect CAT6 cable from Server to Switch(s).
- Connect CAT6 cable from Switch(s) to Workstations.
- Connect CAT6 cable from Switch(s) to Wireless Access Point(s) – (only if used).

Please visit Netgear's Website for further information.

<http://www.netgear.com/>

# Networking & Remote Connection Needs

The Internet has indeed “revolutionized” the way we communicate and disseminate information. The Internet, as we know it, provides a wide array of informational databases. The speed in which we connect to the Internet has become a concern, which is why most businesses opted to subscribe to a DSL provider.

Prime Clinical Systems has developed the utilization of DSL lines as a means of establishing connection between two or more offices. There are other point-to-point connection available (i.e. 56K Digital line, Frame Relay, T1, etc.), however, DSL is still the most cost effective way to link multiple offices. Although DSL lines vary in speed, depending upon the service requested, it could reach speeds of up to a full 1.5 Mb. of bandwidth. In comparison with a normal 56K analog modem connection, a DSL line is still 2.5x faster at its slowest speed. Routers installed (at each location) contain Network Address Translation (NAT) which will enable all Windows based workstation attached to the Local Area Network (LAN) to share one Static IP address.

Prime Clinical Systems is also committed to protect our client database from all Internet intruders. Although our Windows 2003/2008 Servers are equipped with password protection, our goal is to provide the utmost security available in today’s ever changing technology. This is why we have implemented the use of a firewall appliance called Sonic Wall. This device is attached between your DSL modem and Windows 2003/2008 Server. It offers a high level of security from IP filtering to total blackout. The addition of this device to your current DSL configuration will further enhance patient confidentiality.

The following are the system requirements for DSL connectivity:

- **DSL MODEM** with at least 1 Static IP address on all Sites.
- The related cost is as follows:
  - Sonic Wall TZ 105 FireWall Appliance
  - Sonic Wall TZ 205 FireWall Appliance



Please Visit SonicWall's Website for further information.

<http://www.sonicwall.com/index.html>

## Internet Options for Office Connectivity

Choose from a choice of speeds and connection method (DSL or T1) to best suit your office(s) needs. When your office(s) grows and needs more bandwidth, most ISPs allow simple upgrades to a higher speed for a minimal one-time charge. (All speeds may not be available in all areas – Check with your ISP for further information and pricing.)

## DSL – Bandwidth that’s not necessarily guaranteed

<b>SDSL Connection (Same Speed Up And Down)</b> <b>Highest Speed (Recommended)</b>	768k x 768k (5 – 10 users)
	1.0M x 1.0M (10+ - 25 users)
	1.5M x 1.5M (25+ users and possible remote office scanning - results may vary)

A business-class broadband connection that includes features that support multiple users, websites, and customized web and email addressing is recommended.

A Sample DSL Package to look for could include:

- DSL connection
- Business Class Router (**Firewall/VPN Router can be supplied by Prime**)
- 10 MB of email storage space per email account
- 100 MB of web space
- 1 static IP [Static IPs is required to route to server(s)]
- Up to 5 extra static IPs (if needed)

**We suggest SDSL over ADSL or IDSL as a better business choice for Medical Offices.**

## T1 – Bandwidth that is guaranteed

Get the bandwidth of a full T1 (1.5 up and down) or choose from 3 speeds of fractional T1s. (All speeds may not be available in all areas):

- 768k x 768k (“Fractional T1”)
- 1.0M x 1.0M (“Fractional T1”)
- 1.5M x 1.5M (Full T1)
- A business-class broadband connection that includes features that support multiple users, websites, and customized web and email addressing is recommended.

A Sample T1 Package to look for may include:

- T1 connection including local loop
- Business Class Router (**Firewall/VPN Router can be supplied by Prime**)
- 1 static IP [required for routing to server(s) and Up to 5 extra – IPs (If needed)]

**\*\*Note: Internet Access is also a requirement for Prime Support.**

# Video Capture Device

## Canopus ADVC55 A/D Converter



ADVC55 - High-quality Analog-to-Digital Video Conversion -- Use ADVC55 to connect VHS, Hi8 and other analog video equipment to a DV camera, deck or editing system. ADVC55 is a compact and easy to use digital video converter compatible with Windows computers.

### **FEATURES:**

- > Connects to all widely used DV and analog video equipment
- > Compatible with Windows and Mac OS DV editing systems
- > Compatible with leading editing and DVD authoring applications including Canopus EDIUS, Canopus Let's EDIT, Sonic, Foundry®, Vegas®, Final Cut Pro®, Avid Xpress® DV, Adobe® Premiere® Pro, Pinnacle Edition, Ulead Media Studio® Pro, and Windows Movie Maker
- > No need to install drivers or any software applications
- > Powered by IEEE 1394 (FireWire) connector\*
- > NTSC and PAL compatible

**\*\*Note:** a video capture card or OHCI FireWire connection is required to capture DV

## **USB Delcom Foot Switch w/5M Cable for Video Capture**



**This device is a USB compliant foot switch, which uses the Delcom USB driver. It is self powered and is read via the USB port. Simple plug and play technology. Dimensions are 3" by 3". Includes 5 Meter USB Cable.**

# Voice Recognition Software

## Dragon NaturallySpeaking 10 Product Suite

Dragon NaturallySpeaking 10 is here, and the world's best-selling speech recognition system just keeps getting better. Dragon NaturallySpeaking is faster and more accurate than ever, delivering up to 20% more accurate results than Version 9. Your transcribed words now appear on the screen in half the time it took in the past. With new Dragon Voice Shortcuts, you can search the Web for information, products, news and more with a single voice command. Updated graphical icons for the DragonBar are intuitive and easy to see. New Quick Voice Formatting makes it easier to format, delete, and copy words and passages with a single command.

### Installs and Runs on Microsoft Vista 64-bit systems

*Runs on many operating systems, including Vista 64-bit*

In addition to running on 32-bit operating systems, Dragon is now available within a [Vista 64-bit environment](#). Customers using many of the latest laptops and desktop PCs that ship with the Vista 64-bit operating system can install and run Dragon in the same manner as other operating systems.

### Enhanced Documentation

*Improved documentation, Help files and Tutorials help to make Dragon easier to set up and use*  
A newly developed "Commands Quick Reference" sheet highlighting the most useful and most popular voice commands is now posted on the Nuance Web site and is included on the version 10.1 DVD. The online Help, which includes reference material, trouble-shooting information and step-by-step procedures, has been updated to support new features and clarify key topics. In addition, the tutorial delivers enhanced navigation capabilities, as well as more details and tips about product features.



**Please visit Scansoft's Website for further information.**

<http://www.scansoft.com/naturallyspeaking/>

**\*\*Available also for Vista Business 64-bit\*\***

# **BACKUP POWER SUPPLY (Smart UPS)**

## **APC Uninterruptible Power Supply UPS1000 OR UPS1500**



The Back-Smart UPS RS offers high performance protection for your business and office computer systems. It provides abundant battery backup power, allowing you to work through medium and extended length power outages. It also safeguards your equipment from damaging surges and spikes that travel along utility, phone and network lines. A distinguishing feature of the Back-Smart UPS RS is automatic voltage regulation (AVR). AVR instantly adjusts both low and high voltages to safe levels, so you can work indefinitely during brownouts and overvoltage situations, saving the battery for power outages when you need it most. Award-winning shutdown software automatically powers down your computer system in the event of an extended power outage. Additional features like audible alarms, LED status indicators, user replaceable battery, push-button circuit breakers and plentiful outlets (including transformer-block spaced outlets) make the Back-Smart UPS RS the perfect unit to protect your business' productivity from the constant threat of power problems and lost data.

# FAXING

## Faxing from any workstation using Fax Server Software.

Windows 2008 The Fax Server software would be installed on the server with a faxmodem(s). The client software would then be installed on the required network workstations, which allows faxing/receiving from any workstation. [Window2008 \(Standard Edition\) comes with 4 Fax line capability.](#) [Windows 2008 \(Enterprise or Data Center Edition\) comes with unlimited line support.](#)

Patient Chart Manager uses reliable and robust fax server software already built into Windows 2008 Server that will adapt and expand as your business and communications needs grow.

Save time by faxing directly from desktop software. Your faxes arrive immediately on screen.

### **Hardware planning**

When planning and deploying a fax server strategy, server hardware decisions affect the performance of your planned fax configuration.

### **Modems and fax boards**

Fax supports the use of Class 1/1.0 and Class 2/2.0 fax modems.

When selecting a fax modem for use with Windows Server 2003/2008 family Fax, consider that an external modem has some advantages over an internal modem:

- External modems have their own power supply and can be switched on and off without the need to restart your computer.
- Most external modems operate independently of the computer. They do not rely on the computer's CPU to provide real-time responses to fax communication events.
- External modems can easily be transported and configured to work with different computers.
- Modem activity can be monitored with the status lights of an external modem. This is useful for diagnostic purposes.

The number of modems you can attach to your computer through a serial COM port is limited by the number of COM ports available. For computers with universal serial bus (USB) ports, you may consider deploying a USB modem to overcome serial port limitations.

For critical fax applications, consider using a fax board. At the time of writing, Fax Service Provider software is provided by Brooktrout Technology. You can install Brooktrout fax boards for use with Fax. For more information and specifications, see [Brooktrout Technology products](#). Other vendors can also provide Fax Service Provider software to extend and enhance Fax functionality.

### **Fax device limitations**

Fax has the following fax device limitations for Windows Server 2003 family computers:

<b>Operating system</b>	<b>Device limitation</b>
Windows Server 2008, Standard Edition	4 devices
Windows Server 2008, Enterprise Edition	Unlimited
Windows Server 2008, Datacenter Edition	Unlimited



# BACKUP SOFTWARE

S Y M A N T E C   B a c k u p   E x e c <sup>™</sup>   f o r  
W I N D O W S   S V E R   S I O N   2 0 1 0



**Symantec Backup Exec™ 2010 SVR for Windows® Servers** is the gold standard in Windows data protection, delivering disk-to-disk-to-tape backup and fast, efficient recovery including certified support for Windows Server 2008. With patent-pending Granular Recovery Technology and continuous data protection for critical Microsoft applications, you can be confident that your business data is always protected and easily restored.

- Enables simple, easy-to-use continuous data protection of Exchange, SQL, and Windows file servers.
- Provides complete disk-to-disk-to-tape protection in one solution.
- Offers fully scalable solution, including centralized management and SAN support for growing businesses.
- Now enhances data security with encryption and protects both 32-bit and 64-bit systems.
- Recovers critical data in seconds including individual Exchange messages, SharePoint documents, and Active Directory items from one backup.
- Eliminates backup windows.
- Delivers fast, reliable data backup and recovery for Windows servers, as well as desktops and laptops.
- Enables end user file retrieval—without IT intervention.

**\*\*Notes:** HD/Tape Backup Drive(s) size can vary depending on the size of practice(s). Backup and Verification of your E.M.R. files are extremely critical – as they are with On-staff!!!

**Please Visit the Symantec's Website for further information:**

<http://www.symantec.com/product/index.jsp>

### **\*\*\*Disclaimer**

**All Prices Mentioned in this document are estimated prices. Actual prices may vary.**

**\*\*Microsoft Backup is not recommended.**

# Antivirus Software



[Microsoft Security Essentials](#) is a new, free consumer anti-malware solution and spyware protection for your computer. It helps protect against viruses, spyware, and other malicious software. The tool offers free spyware protection, and it's available as a no-cost download for Windows XP SP2 and higher, Windows Vista, and Windows 7.

- **Comprehensive protection**—Microsoft Security Essentials helps defend your computer against viruses, worms, Trojans, and other malicious software and provides you with free spyware protection.
- **Easy to get, easy to use**—Because Microsoft Security Essentials is available at no cost, there's no registration process that requires billing or personal information collection. It installs after a quick download and [Genuine Windows validation](#) and then stays automatically up-to-date with the latest spyware protection technology and signature updates.
- **Quiet Protection**—Microsoft Security Essentials doesn't get in your way. It runs quietly in the background and schedules a scan when your computer is most likely idle. You only see alerts when you need to take action.

**Notes: Other Anti-Virus/Security programs (i.e. AVG and ESET) were found to have caused program delays.**

For more product information and to download the product, visit:

<http://windows.microsoft.com/en-US/windows/products/security-essentials>

# HEADSET



## Product Features

### Compatible with CD, DVD and MP3 players and IP-based communication

- Via a detachable USB adapter with two 3.5mm plugs.

### In-line volume control and microphone mute switch

- Let you place noise at your ideal level.

### 10' single-sided cable

- Wind-up clip keeps excess cable wire out of your way.

### 40Hz – 20kHz frequency response

- For faithful sound reproduction.

### 118dB sensitivity

- For powerful sound.

### 32 ohms impedance

- To efficiently conduct power.

# DYMO LABEL WRITER 450



**Label faster. Mail smarter. Look sharp.**

Take the hassles out of label printing with the DYMO® LabelWriter® 450 label printer. Label, mail, and file smarter with proprietary DYMO® Productivity Software, featuring the new DYMO Label version 8, DYMO File™ and Address Fixer™. DYMO Label version 8 software enables you to create and print address, shipping, file, folder and barcode labels, plus name badges and more – all without the extra work and hassles of printing sheet labels on a standard desktop printer.

# WINDOWS 7 PROFESSIONAL



## **Work anywhere more easily and securely**

If you use your PC for work, you'll want Windows 7 Professional. It helps you be more productive and protects the critical information you work with. Many routine tasks just take a couple of clicks, so you can spend less time setting up projectors, printers, and networks. Advanced backup options help you protect your hard work with automatic backups to your home or business network. And with Windows XP Mode, you can use virtually all of your Windows XP programs in Windows 7.